

Somatic Mutations NGS Assay

compatible with Illumina Platform

REF

9-231

RUO



16 Reactions



Upon arrival, please store components according to their labels!

ViennaLab Diagnostics GmbH

Gaudenzdorfer Guertel 43-45

A-1120 Vienna, Austria

Phone: (+43-1) 8120156-0

info@viennalab.com



www.viennalab.com

Instructions for use

Table of Contents

Covered Genes	3
Provided Materials	4
Additional Required Materials (Not Provided).....	5
Before you begin.....	6
Protocol overview.....	7
Part 1. Generation of Indexed Library.....	8
Step 1. Enzymatic DNA Fragmentation, End repair and A-Tailing (FEAT).....	8
Step 2. Adapter Ligation and Activation.....	10
Step 3. Bead clean-up after Adapter Ligation	11
Step 4. Amplification of Adapter-Ligated Library (Dual Index).....	12
Step 5. Bead clean-up after indexing PCR	14
Step 6. Quality Assessment and Quantification of Index-Tagged Libraries.....	16
Part 2. Hybridization	17
Step 1. Hybridization of Capture Probes to the Library	17
Step 2. Preparation of Streptavidin Beads.....	24
Step 3. Selection of Target-Captured Library	25
Part 3. Amplification of Target-Captured Library	27
Step 1. Amplification of the Target-Captured Library	27
Step 2. Bead clean-up of Amplified Target-Captured Library.....	29
Step 3. Quality Assessment and Quantification of Final Libraries.....	30
Instruction for pooling and Illumina sequencing	31
Bioinformatic Analysis	32
Appendix	35
Removal of Primer-Dimers	35

Covered Genes

The ViennaLab Somatic Mutations Panel covers the most relevant cancer-associated genes for somatic variants.

SNV, InDel

APC	BRAF	EGFR	ERBB2	KRAS
MET	NRAS	PIK3CA	SMAD4	TP53

Target Region: Whole Coding Sequence (CDS) region

Fusions

ALK	RET	ROS1
(exon 18 – 21)	(exon 6 – 12)	(exon 31 – 36)

Targeted fusions: genomic area covered between listed exons

Total Panel Target size: 62 kb

Provided Materials

Table I. Library Preparation Box #1

Product Name	Storage Condition
FEAT Buffer	
FEAT Enzyme	
Ligation Buffer	
Ligation Enzyme	-30°C to -15°C
Adapter	
Activation Enzyme	
2x PCR Mix	

Table II. Library Preparation Box #2

Product Name	Storage Condition
Dual Index Primer i5 (4 different primers)	-30°C to -15°C
Dual Index Primer i7 (4 different primers)	

Table III. Target Capture Box #1

Product Name	Storage Condition
Block #1	
Block #2	
Block #3	-30°C to -15°C
Capture Probe #2	
Post Capture PCR Forward Primer	
Post Capture PCR Reverse Primer	

Table IV. Target Capture Box #2

Product Name	Storage Condition
Wash Buffer #1	
Wash Buffer #2	
Wash Buffer #3	+19°C to +25°C
Library Hyb Buffer	

Table V. Somatic Mutations Target Capture Box #3

Product Name	Storage Condition
Somatic Mutations Capture Probe #1	-90°C to -60°C

Table VI. Additional Provided Reagents – Beads

Product Name	Storage Condition
Clean up Beads	
Streptavidin Beads	+2°C to +8°C

Additional Required Materials (Not Provided)
Table VII. Additional Reagents and Consumables (Not Provided)

Product Name	Suggested Supplier
Nuclease-free water (not DEPC-treated)	General lab supplier
Ethanol (200 proof)	General lab supplier
Conical centrifuge tubes (15 ml or 50 ml)	General lab supplier
P10, P20, P200 and P1000 pipettes	General lab supplier
Multichannel pipette	General lab supplier
Sterile, nuclease-free aerosol barrier pipette tips	General lab supplier
0.2 ml PCR Tube Strips, Low Profile and Cap Strips or 96-well PCR plates and adhesive seals	General lab supplier
Powder-free gloves	General lab supplier
DNA LoBind Tubes, 1.5 ml PCR clean, 250 pieces	Eppendorf (p/n: 022431021 or equivalent)

Table VIII. Additional Equipment (Not Provided)

Description	Suggested Supplier
Thermal Cycler (with adjustable lid temperature)	e.g. Eppendorf X50s
Fluorometric DNA quantification device	e.g. Qubit Invitrogen
Centrifuge (for 1.5 ml tubes, PCR strips, 96well PCR plates)	General lab supplier
Vertical rotator	e.g. bioSan Multi Bio RS-24
Realtime PCR System (optional)	General lab supplier
CoolBox™ XT PCR Strip Workstation, alternatively ice bucket	BioCision
Vortex mixer	General lab supplier
Thermomixer	e.g. Eppendorf ThermoMixer F1.5
Fragment Analyzer NGS / TapeStation / BioAnalyzer	Agilent
Magnetic separator (for 1.5ml tubes, 0.2ml PCR strips or 96-well plates)	General lab supplier
Optional: vacuum concentrator	e.g. Eppendorf Concentrator plus

Before you begin

General

- Read the manual carefully to understand the experimental procedure and make sure that you have all the required equipment before starting an experiment.
- Possible stopping points, where samples may be stored at -30°C to -15°C, are indicated in the protocol.
- Important steps which affect the quality of the data produced are highlighted.

Important

The accurate quantification and quality of the input DNA have a large impact on the results obtained. For accurate quantification use dsDNA specific assays (e.g. Qubit). Do not use Nanodrop or other spectrophotometric methods. The protocol has been optimized for high quality DNA input amounts between 50-500 ng. DNA extracted from FFPE tissue is highly variable in quality and often already fragmented. Use higher amounts of FFPE DNA (150-500 ng) if possible.

Directions for the use of this product

1. This product is for Research Use Only.
2. Use pipettes dedicated to PCR setup only. Use aerosol-guarded pipette tips.
3. Adhere to recommended storage temperatures, which are: room temperature (RT, +19°C to +25°C), fridge (+2°C to +8°C), freezer (-30°C to -15°C) and deep freezer (-90°C to -60°C).
4. Always handle enzymes with care and avoid vortexing them. Mix them by slowly pipetting up and down. Keep enzymes on ice during reagent setup and store them back at -30°C to -15°C as soon as possible after each use.
5. Never freeze Clean-up beads or Streptavidin beads. Store them at +2°C to +8°C and keep Clean-up beads at +19°C to +25°C for at least 30 minutes before use.
6. Use 1.5 ml LoBind tubes instead of regular 1.5 ml tubes whenever low concentrated DNA samples are involved.

Safety information

1. Do not drink, eat, smoke, or apply cosmetics in designated work areas. Always use disposable powder-free gloves and wear suitable laboratory coat when handling specimens and reagents. Wash hands thoroughly afterwards.
2. Handle specimens as if capable of transmitting infectious agents. Thoroughly clean and disinfect all materials and surfaces that have been in contact with specimens. Discard all waste associated with clinical specimens in a biohazard waste container.
3. Avoid contact of DNA with skin, eyes, or mucous membranes. If contact does occur, immediately wash with large amounts of water. If irritation persists: Get medical advice/attention. If spilled, dilute with water before wiping dry.
4. Adhere to all local and federal safety and environmental regulations which may apply.

If you have any questions related to the protocol or the product, please contact techhelp@viennalab.com.

Protocol overview

The Somatic Mutations NGS Assay offers a complete solution to detect and analyze SNVs, InDels and targeted fusions in selected cancer associated genes. First, DNA is converted into an Illumina compatible NGS-ready library. Second, targeted enrichment of selected genomic regions by biotinylated probes allows to maximize the accurate identification of disease-causing somatic variants in a cost-efficient manner. Third, sequencing data can be uploaded to a tailored bioinformatic pipeline via a secure web-interface. Provided analysis includes automated processing and QC of the data, identification and annotation of variants as well as selection of variants for the generation of a meaningful report.

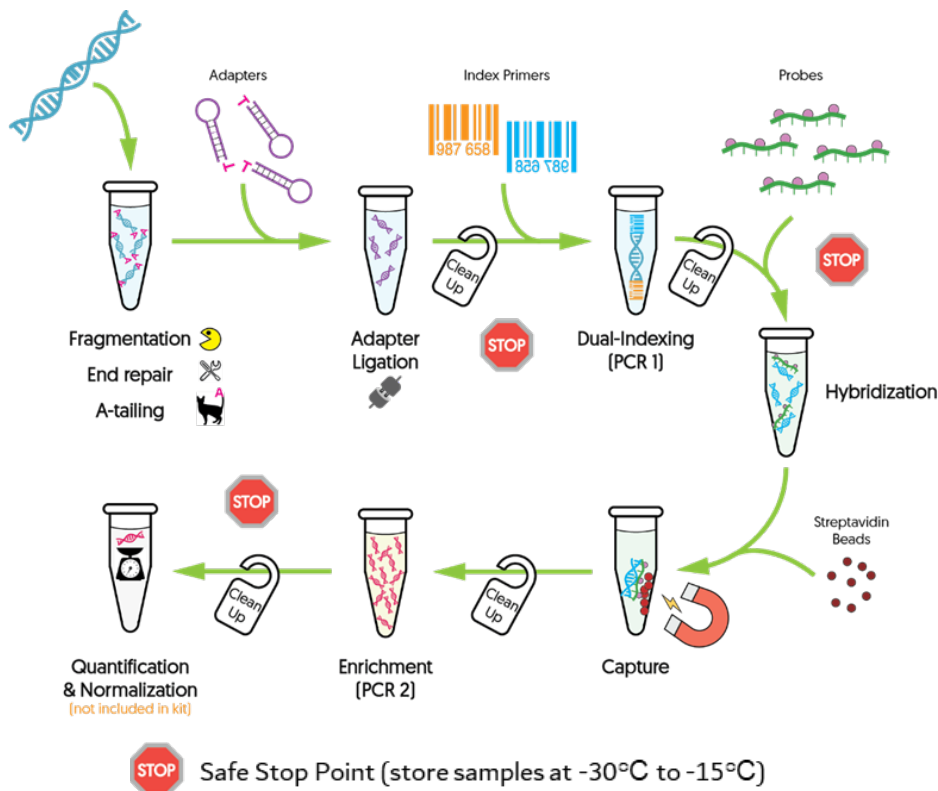


Figure 1. Graphical workflow overview

	Workflow	Total time	Hands on time
Part 1	Fragmentation, End-repair, A-tailing	1 hour	15 min
	Adapter ligation & Activation / Bead Clean-up	1 hour 15 min	30 min
	Dual Indexing / Bead Clean-up	1 hour 30 min	30 min
	Quality Assessment and Quantification	30 min to 1 hour	20 min
Part 2	Hybridization	16 hours	1 hour
	Capture	1 hour 15 min	20 min
Part 3	Enrichment / Bead Clean-up	1 hour 30 min	30 min
	Quality Assessment and Quantification	30 min to 1 hour	20 min

Part 1. Generation of Indexed Library

Step 1. Enzymatic DNA Fragmentation, End repair and A-Tailing (FEAT)

Note: This protocol has been optimized for high quality genomic DNA inputs between 50 ng and 500 ng and will generate libraries with an average fragment size of 350-450 bp. Although recommendations for DNA samples with lower quality (e.g. FFPE) are given, optimization of fragmentation time may be required.

[Required Material]

- Accurately quantified DNA (gDNA)
- Library Preparation Box #1 → FEAT Buffer, FEAT Enzyme
- 0.2 ml PCR tubes and caps
- Nuclease-free water

[Procedure]

1. Transfer **50-500 ng of DNA** into a new 8 strip PCR tube (or 96-well plate) on ice, and adjust the volume of the sample to **21 µl** according to Table 1.

Table 1. Input sample adjustment

Reagent	Volume per sample (µl)
DNA sample	x
Nuclease-free water	21 - x
Total volume	21

2. Prepare a master mix on ice, as described in Table 2 (examples are given for 1 reaction as well as for 8 samples including 0.5x excess volume). Mix well by pipetting up and down 5-10 times.

Table 2. Composition of Enzymatic Prep Master Mix. Prepare on ice.

Reagent	1 Reaction (µl)	8.5 Reactions (µl)
FEAT Buffer	3	25.5
FEAT Enzyme	6	51
Total volume	9	76.5

Critical: Prepare master mix on ice and keep on ice until placed in the thermal cycler!

3. **Add 9 µl of Enzymatic Prep Master Mix** to each well containing the DNA sample, mix well by pipetting 5-10 times (setting pipette to 20 µl) and quick-spin the tubes. Keep reaction mix on ice until ready to avoid over-fragmentation as FEAT Enzyme is active at room temperature.

4. Start the following thermal cycler program:

Table 3. Fragmentation, End-repair and A-Tailing (lid temperature: 70°C, vol = 30 µl)

Step	Temperature	Time
1	4°C	Hold
2	32°C	15 minutes*
3	65°C	30 minutes
4	4°C	Hold

Important: Start program and hold at 4°C before putting the reaction mix into the thermal cycler.

* We recommend to use the same protocol also for partially fragmented DNA such as FFPE DNA. In case that the fragmentation profile does not look as expected, incubation times at 32°C can be modified +/- 5 min accordingly.

5. Once the program has reached the initial 4°C, add the prepared sample mix into the thermal cycler and continue with the program. In the meantime, start preparations for the Adapter Ligation and Activation step (Part 1, Step 2).

Important: Fragmented samples should not be kept at 4 °C longer **than one hour before continuing**.

Step 2. Adapter Ligation and Activation

[Required Material]

- Library Preparation Box #1 → Ligation Buffer, Ligation Enzyme, Adapter, Activation Enzyme

Tip: Thaw Adapter and Ligation Buffer on ice in advance. Make sure that Ligation Buffer is fully thawed (if needed leave at room temperature for 1 min) and mix well before proceeding.

- 0.2 ml PCR tubes and caps
- Nuclease-free water

[Procedure]

1. Take out tubes from cycler (Step 1.5) and store on ice.
2. **Add 10 µl of Adapter** directly into the PCR tube (DNA sample) where the Fragmentation, End-repair and A-Tailing reaction was performed. Mix well by pipetting up and down 5-10 times or by gentle vortexing. Spin down briefly.
3. Prepare Ligation Master Mix on ice in a new 1.5 ml LoBind tube as described in Table 4.

Important: Ligation Buffer is highly viscous. Make sure to thaw completely and mix slowly but thoroughly with a P200 pipette before use.

Table 4. Composition of Ligation Master Mix. Prepare on ice.

Reagent	1 Reaction (µl)	8.5 Reactions (µl)
Nuclease-free water	4	34
Ligation Buffer	12	102
Ligation Enzyme	4	34
Total volume	20	170

4. **Add 20 µl of Ligation Master Mix** into the PCR tube containing DNA sample and adapter. Mix well by pipetting up and down 10 times or by gently vortexing. Spin down briefly.
5. Incubate the Ligation mix at 20°C for 20 minutes (Table 5) in the thermal cycler (no heated lid, volume: 60 µl).

Table 5.

Temperature	Time
20°C	20 minutes

6. Add 3 µl of Activation Enzyme to each sample tube, mix-well by pipetting up and down 5-10 times and spin down briefly.
7. Incubate at 37°C for 15 minutes (Table 6) in the thermal cycler (lid temperature: 40°C, final volume = 63 µl). After incubation **continue directly with bead clean-up**.

Table 6.

Temperature	Time
37°C	15 minutes

Step 3. Bead clean-up after Adapter Ligation

[Required Material]

- Clean-up Beads
Important: Keep the beads at room temperature for at least 30 minutes before use.
 Store Clean-up Beads at +2°C to +8°C after use and do not freeze.
- 80% ethanol solution (always prepare fresh on the day of the experiment, e.g. 8 ml 100% EtOH + 2 ml nuclease free water)
- Nuclease-free water

[Procedure]

1. Let the Clean-up Beads come to room temperature for at least 30 min. Mix well so that they appear homogenous and consistent in color.
2. **Add 50 µl of homogenous Clean-up Beads (0.8x volume)** directly to the 63 µl Adapter-Ligated sample. Mix well by pipetting/vortexing and spin down briefly (make sure not to pellet the beads, they need to stay homogeneously in solution). **Incubate at room temperature for 5 minutes.**
3. Place the tube in a magnetic separator for **3-5 minutes**, or until the solution is clear.
4. Keep the tube in the magnetic separator and carefully discard the supernatant (do not touch the beads as this might result in sample loss).
5. Keeping the tube in the magnetic separator, **add 200 µl of freshly prepared 80% ethanol** to each tube.
6. **Incubate for 30 seconds at room temperature** and carefully discard the 80% ethanol solution (do not touch the beads as this might result in sample loss).
7. Repeat the 80% ethanol wash (steps 5-6) one more time **for a total of two washes.**
8. Spin down briefly, place the tube back into a magnetic separator and discard residual ethanol with a P10 or smaller pipet.
9. **Dry the sample tube at room temperature for 3-5 minutes** or until residual ethanol has completely evaporated (avoid excessive bead drying until beads appear cracked, as this might reduce elution efficiency).
10. **Add 22 µl of nuclease-free water** to the sample and mix well by pipetting/vortexing. Pulse-spin down and incubate the sample **at room temperature for 2 minutes.**
11. Place the tube into the magnetic separator for **2 minutes** or until the solution is clear.
12. **Transfer the supernatant (20 µl)** to a new 0.2 ml PCR tube and continue with the next step. Alternatively, transfer the 20 µl supernatant into a new 1.5 ml LoBind Tube and store at -30°C to -15°C until needed.

Stopping Point: If not continuing with the next step, samples can be stored at -30°C to -15°C.

Step 4. Amplification of Adapter-Ligated Library (Dual Index)

Note: Select the appropriate Dual Index Primers for each sample (Table 8) and use a different Dual Index Primers combination for each sample. In case of low number of samples to multiplex, consider balanced barcode combinations following these rules: use primers in ascending order and use at least two different forward (i5) and reverse primers (i7) (e.g. 501 + 701, 501 + 702; 502 + 701 and 502 + 702 in case of 4 samples).

[Required Material]

- Library Preparation Box #2 → Dual Index Primer i5, Dual Index Primer i7
- 2x PCR mix
- 0.2 ml PCR tubes and caps

[Procedure]

1. Make sure that the sample from Step 3.12 is in a 0.2 ml PCR tube and keep on ice during setup.
2. **Add 2.5 µl of Dual Index Primer i5 and 2.5 µl of Dual Index Primer i7** individually to each tube from Step 3.12. Use different Dual Index Primer combinations for each sample.

Important: Select appropriate dual index combinations (Table 8) as described above.

3. **Add 25 µl of 2x PCR mix** to each tube, mix thoroughly by pipetting up and down 5-10 times, spin down briefly and put back on ice.
4. Transfer tubes to the thermal cycler and run the PCR program shown in Table 7-1 (see the number of PCR cycles in Table 7-2).

Table 7-1. PCR program (lid: 105°C, final volume: 50 µl, limit ramp rates to max. 4 °C/sec for heating and max. 2.5 °C/sec for cooling)

Step	Temperature	Time
Step 1	98°C	45 seconds
Step 2	98°C	15 seconds
Step 3	65°C	30 seconds
Step 4	72°C	1 minute
Step 5	-	Repeat step 2 to step 4 (see Table 7-2 for total PCR cycle number)
Step 6	72°C	10 minutes
Step 7	4°C	Hold

Table 7-2. Selection of PCR cycle number

Input DNA amount (ng) Step 1	Total PCR Cycles
>500 ng input DNA	6
100-500 ng input DNA	8
50-100 ng input DNA	10
<50 ng input DNA	12

Note: The quality of gDNA can affect PCR efficiency. In case of **FFPE** DNA, it is recommended to perform **at least 12 cycles** with 150 ng input DNA.

Table 8. Dual Index sequences

Index	Sequence	Index	Sequence
Dual index 501 primer	TATAGCCT	Dual index 701 primer	ATTACTIONG
Dual index 502 primer	ATAGAGGC	Dual index 702 primer	TCCGGAGA
Dual index 503 primer	CCTATCCT	Dual index 703 primer	CGCTCATT
Dual index 504 primer	GGCTCTGA	Dual index 704 primer	GAGATTCC
Dual index 505 primer	AGGCGAAG	Dual index 705 primer	ATTCAGAA
Dual index 506 primer	TAATCTTA	Dual index 706 primer	GAATTCGT
Dual index 507 primer	CAGGACGT	Dual index 707 primer	CTGAAGCT
Dual index 508 primer	GTACTIONG	Dual index 708 primer	TAATGCGC
Dual index 509 primer	GACCTGTA	Dual index 709 primer	CGGCTATG
Dual index 510 primer	CGGTGGTA	Dual index 710 primer	TCCGCGAA
Dual index 511 primer	GTTGGACT	Dual index 711 primer	TCTCGCGC
Dual index 512 primer	CTAAGATC	Dual index 712 primer	AGCGATAG
Dual index 513 primer	AATGGTTC	Dual index 713 primer	GCATAGTG
-	-	Dual index 714 primer	CATTCCAG
-	-	Dual index 715 primer	GGCAGGAT
-	-	Dual index 716 primer	CAACAACA

Step 5. Bead clean-up after indexing PCR

[Required Material]

- Clean-up Beads
Important: Keep the beads at room temperature for at least 30 minutes before use. Store Clean-up Beads at +2°C to +8°C after use and do not freeze.
- 80% ethanol solution (always prepare fresh on the day of the experiment, e.g. 8 ml 100% EtOH + 2 ml nuclease free water)
- Nuclease-free water

[Procedure]

1. Let the Clean-up Beads come to room temperature for at least 30 min. Mix well by vortexing so that they appear homogenous and consistent in color.
2. **Add 50 µl Clean-up Beads (1:1 volume ratio)** directly into the 50 µl amplified Adapter-Ligated sample. Mix well by pipetting/vortexing and spin down briefly (make sure not to pellet the beads, the solution has to be homogeneous). **Incubate at room temperature for 5 minutes.**
3. Place the tube in a magnetic separator for **3-5 minutes** or until the solution is clear.
4. Keep the tube in the magnetic separator and discard the supernatant (do not touch the beads as this might result in sample loss).
5. Keeping the tube in the magnetic separator, **add 200 µl fresh 80% ethanol** to each sample tube.
6. **Incubate for 30 seconds at room temperature** and then discard the 80% ethanol (be careful not to touch the beads while you remove the supernatant).
7. Repeat 80% ethanol wash (steps 5-6) one more time **for a total of two washes.**
8. Spin down and place the tube in the magnetic separator and discard residual ethanol with a P10 or smaller pipet.
9. **Dry the sample tube at room temperature for 2 minutes** or until residual ethanol has completely evaporated (avoid drying beads until pellet appears cracked, as excessive drying decreases elution efficiency).

Important: In the case you have a vacuum concentrator, proceed to steps 10a-12a, otherwise continue with steps 10b-12b.

With Vacuum Concentrator

- 10a. **Add 32 µl of nuclease-free water** to the sample and mix well on a vortexer. Pulse-spin down and incubate the sample **at room temperature for 2 minutes.**
- 11a. Place the tube in the magnetic separator for **2 minutes** until the solution is clear.
- 12a. **Transfer the supernatant (30 µl)** into a new 1.5 ml LoBind Tube.

Without Vacuum Concentrator

- 10b. **Add 8 µl of nuclease-free water** to the sample and mix well by pipetting, making sure to resuspend all beads. Spin down briefly without pelleting the beads, and incubate the sample **at room temperature for 2 minutes**.
- 11b. Place the tube in the magnetic separator for **2 minutes** until the solution is clear.
- 12b. **Transfer the supernatant (7 µl)** into a new 1.5 ml LoBind Tube.

Stopping Point: If not continuing with the next step, samples can be stored at -30°C to -15°C.

Step 6. Quality Assessment and Quantification of Index-Tagged Libraries

[Procedure]

1. Quantify amplified libraries from Part 1, Step 5.12a or Step 5.12b using a fluorometric method such as the Qubit dsDNA kit. The protocol requires an input of 500-750 ng of indexed library per sample for the upcoming hybridization. In case a vacuum concentrator is not available, this amount needs to be reached in a total volume of 3.4 µl.
2. Additionally, determine the fragment size profile (e.g. with instruments such as TapeStation, Bioanalyzer or Fragment Analyzer) to check for appropriately fragmented and adapter ligated DNA. A typical library displays a single peak between 200-800 bp with the maximum at ca. 350-450 bp (see Figure 2). The profile of FFPE DNA can normally have a smaller and narrower main peak.

In addition, no or only minimal primer dimers at around 120 bp should be visible. If the primer dimer peak is clearly visible (see Appendix, Figure 9-1), an additional bead clean-up step using a [bead] : [sample] ratio = 0.8 : 1 is recommended (see Appendix).

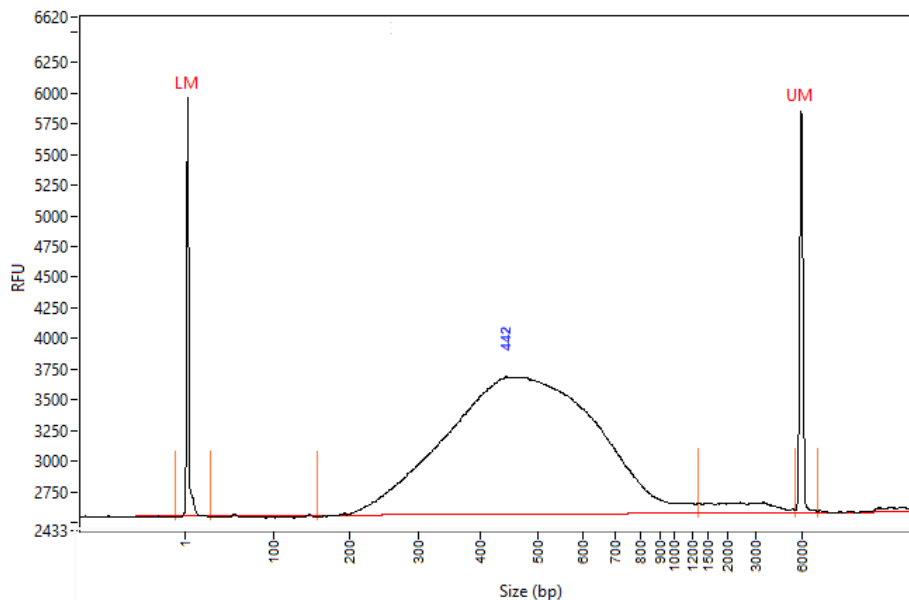


Figure 2. Electrophoresis diagram detected by Fragment Analyzer with the main peak ranging from 200-800 bp and the maximum at 442 bp.

Part 2. Hybridization

Recommendation:

We recommend to perform a pilot test to determine if the plasticware and PCR machine seal tightly and avoid excessive evaporation:

1. Pipet 32 μ l of nuclease-free water into multiple wells of a PCR plate or 0.2 ml PCR tubes intended to be used. After sealing the PCR plates or tubes with sealing tape or PCR caps, incubate at 65°C for 2 hours (lid temperature is 105°C). If using PCR tubes, place them centrally in the cycler and put empty tubes on the edge positions to enable equally distributed pressure from the heating lid.
2. Ensure that there is no excessive evaporation by measuring the volume afterwards and observe if there are equal volumes in all filled wells. It is necessary that evaporation does not exceed 4 μ l from the total to guarantee optimal assay performance.

Step 1. Hybridization of Capture Probes to the Library

Important:

- The hybridization requires 500-750 ng of indexed library as input. The following protocol has been optimized with the use of a vacuum concentrator (p.19, Section 1.1). If not available, the desired hybridization input amount needs to be provided with a maximum volume of 3.4 μ l (147-220 ng/ μ l). In this case, continue with the alternative protocol on p.19 (Section 1.2).
- Thaw the Capture Probe #1 on ice slowly and put back at -90°C to -60°C after use. Avoid too many freeze/thaw cycles.
- Do not vortex Capture Probe #1 (tapping or pipetting is allowed).
- Library Hyb Buffer should be pre-warmed for at least 15 minutes at 37°C (check for any precipitates) before use.
- Keep the samples in the cycler at 65°C during the whole hybridization process.

[Required Material]

- Vacuum concentrator (optional)
- Target Capture Box #1 → Block #1, Block #2, Block #3, Capture Probe #2
- Target Capture Box #2 → Library Hyb Buffer
- Target Capture Box #3 → Capture Probe #1

[Overview]

To perform hybridization, three parts are needed:

1. Block reagents mixed together with the DNA library
2. Library Hyb buffer
3. Capture probe mix targeting the desired region to be sequenced

The three components are sequentially incubated in a thermal cycler (either in a 96-well PCR plate or in multiple 0.2 ml 8-well PCR strips) and later mixed together in a specific order as displayed in Figure 3. At the end of the procedure, all reagents will be in column 3.

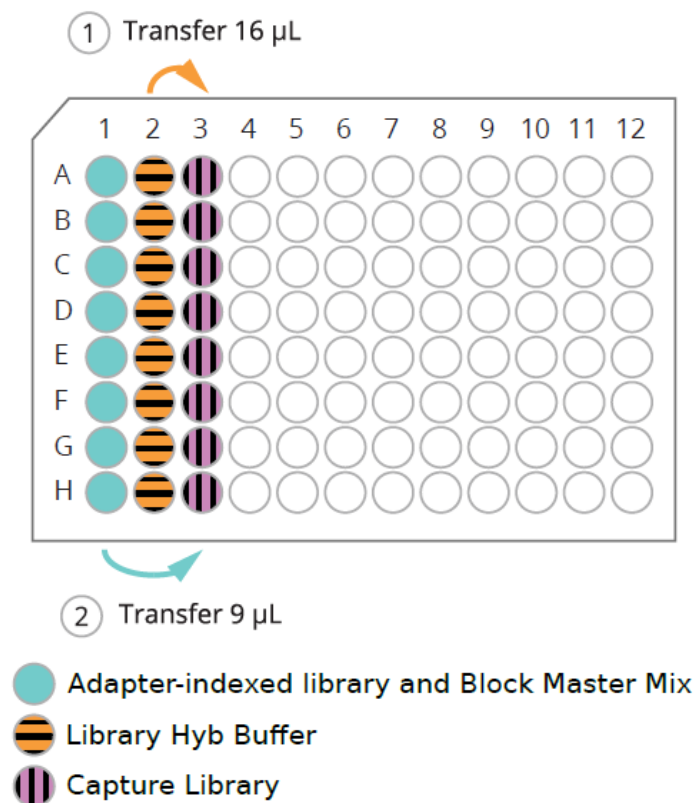


Figure 3. Overview of final plate setup

[Procedure]

1. Preparation of Block Mix with amplified Indexed Library

Note: The required amount of DNA for hybridization is between **500-750 ng**. Do not exceed this amount per sample. If less input for hybridization is used, final library yield will be reduced and the sensitivity of detection of low frequency variants will be decreased.

Important: For the preparation of the Block Mix with amplified Adapter-Ligated DNA library follow Step 1.1 if you have a vacuum concentrator or 1.2 if you do not.

 1.1 *Block Mix procedure with vacuum concentrator*

- a. Based on the concentration of the sample from PCR 1, add the corresponding volume of **500-750 ng of each amplified Indexed Library** in a new tube compatible with the vacuum concentrator (either 1.5 ml LoBind tube or 0.2 ml PCR strip).
- b. Prepare Block Mix as shown in Table 9-1.

Table 9-1. Block Mix (with vacuum concentrator)

Reagent	Volume for 1 Library (µl)	Volume for 8.5 Libraries (µl)
Block #1	2.5	21.25
Block #2	2.5	21.25
Block #3	0.6	5.1
Total volume	5.6	47.6

- c. **Add 5.6 µl of Block Mix** to each tube containing the library.
 - d. **Completely dry** the amplified indexed library and Block Mix using a vacuum concentrator at $\leq 45^{\circ}\text{C}$.
 - e. **Add 9 µl of nuclease-free water** into the tube to resuspend the completely dried sample-blocker mix. Pipet up and down 5-10 times to carefully mix and spin down briefly.
- Note:** If needed, transfer the entire Block Mix DNA library (9 µl) into a new 8 strip PCR tube (or 96-well PCR plate), seal and spin down briefly.
- f. Keep the PCR tube (or plate) **on ice** before hybridization.

 1.2 *Block mix procedure without vacuum concentrator*

- a. Prepare Block Mix as shown in Table 9-2.

Table 9-2. Block Mix (without vacuum concentrator)

Reagent	Volume for 1 Library (µl)	Volume for 8.5 reactions (µl)
Block #1	2.5	21.25
Block #2	2.5	21.25
Block #3	0.6	5.1
Total volume	5.6	47.6

- b. **Add 5.6 µL of Block Mix** into a new 8 strip PCR tube (or 96-well PCR plate).

- c. **Add 3.4 µL of Indexed Library** (500-750 ng) to each well or tube containing Block Mix.
 - d. Mix well by pipetting.
 - e. **Seal the tubes (or plate)** and spin down briefly.
 - f. Keep the PCR tube (or plate) **on ice** before hybridization.
2. Preparation of Library Hyb Buffer
- a. Pre-warm Library Hyb Buffer at 37°C at least 15 min before use.
- Note:** Check for any precipitation in the Library Hyb Buffer and make sure to properly mix directly before use.
- b. Pipet 25 µl of Library Hyb Buffer per sample into a new 8 strip PCR tube called “B” (or 96-well PCR plate), seal and spin down briefly.
- Note:** Keep the prepared Library Hyb Buffer at room temperature, do not place on ice.
3. Preparation of Capture Library Mix

Critical

- Thaw Capture Probe #1 on ice slowly.
- Do not vortex Capture Probe #1 and Capture Library Mix (tapping and pipetting are allowed) and put back at -90°C to -60°C after use.

The capture probes are shipped lyophilized, and need to be dissolved with nuclease-free water before use.

Add 134.4 µl of nuclease-free water to Somatic Mutations Capture Probe #1. Mix gently by pipetting up and down 5-10 times, and keep on ice at all times.

Important: 6 µl of the reconstituted solution will be used per hybridization reaction, store the remaining probe solution at -90°C to -60°C after use.

- a. Prepare Capture Library Mix in a 1.5 ml LoBind tube on ice as shown in Table 10. Mix well by gentle pipetting.

Table 10. Capture Library Mix (keep on ice)

Reagent	Volume for 1 capture (µl)	Volume for 8.5 captures (µl)
Capture Probe #1	6	51
Capture Probe #2	1	8.5
Total volume	7	59.5

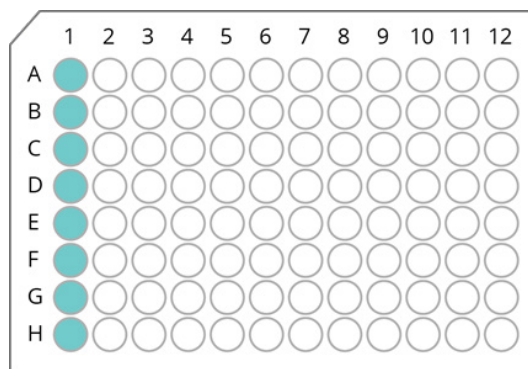
- b. **Put 7 µl of Capture Library Mix** into a new 8 strip PCR tube (or 96-well PCR plate), seal and spin down briefly.
- c. Keep the Capture Library Mix tube **on ice** at all times.

4. Perform the hybridization reaction in a thermal cycler.
 - a. Set up the following program on a thermal cycler (lid temperature: **105°C**).

Table 11. Hybridization Program

Step	Temperature	Time
Step 1	95°C	5 minutes
Step 2	65°C	Hold

- b. Put the Block Mix with indexed library tube (or plate) in the thermal cycler (e.g. in column 1) and start the Hybridization program.



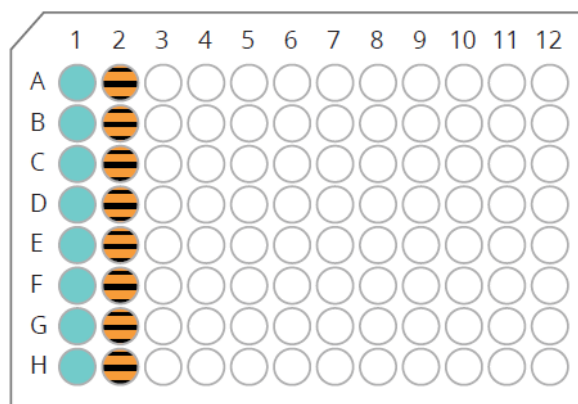
● Adapter-indexed library and Block Master Mix

Figure 4. Adapter-Indexed DNA library and Block Master Mix in ‘Column 1’ (total 9 µl).

Note: From this step on, always keep tubes or plate in the thermal cycler during the entire procedure.

- c. Once the temperature of the thermal cycler reaches 65°C, place the previously prepared **Library Hyb Buffer** tube (**Step 2b**)* into the thermal cycler (e.g. column 2, see Figure 5) and incubate at **65°C** for **3 minutes**.

*When using a 96-well PCR plate, transfer Library Hyb Buffer to an empty column (e.g. column 2) and completely seal the PCR plate quickly.



● Adapter-indexed library and Block Master Mix

● Library Hyb Buffer

Figure 5. Library Hyb Buffer in “Column 2”.

- d. After the incubation of Library Hyb Buffer at 65°C for 3 min, put the previously prepared **Capture Library Mix PCR tube*** (Step 3c) into the thermal cycler (e.g. column 3, see Figure 6) and incubate at **65°C** for **2 minutes**.

*When using a 96-well PCR plate, transfer 7 µl Capture Library Mix to an empty column (e.g. column 3) and completely seal the PCR plate quickly.

After Step d, there should be three lanes of reagents in the thermal cycler, all at 65°C.

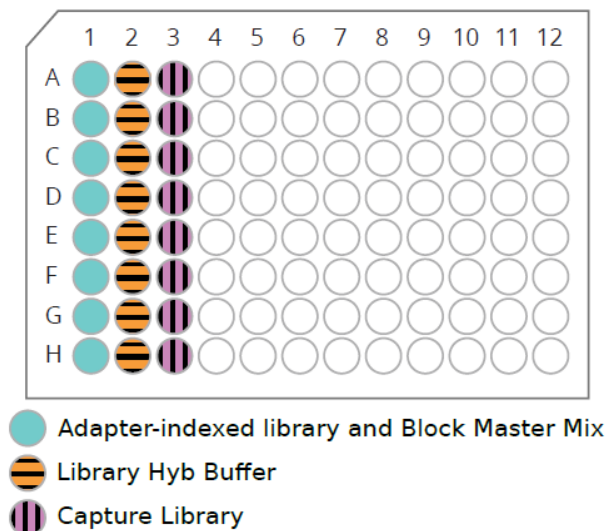


Figure 6. Capture Library in “Column 3”.

Note

- Subsequent steps must be performed quickly and efficiently from the moment the cap (or plate sealing film) is opened. Prolonged exposure to high temperature causes evaporation of reagents.
- Prepare a new cap (or a new sealing film) for the final hybridization step (h) and set the volume of a pipette (or a multichannel pipette) to 16 µl.

Caution: The PCR lid is very hot and serious burns can occur. Avoid touching the lid or PCR block as much as possible.

- e. **Open** the thermal cycler and remove the plate seal/tube caps of the appropriate columns.
- f. Quickly transfer **16 µl** of the **Library Hyb Buffer** (column 2) into the Capture Library Mix (column 3) and mix well by pipetting up and down 2-3 times (Figure 7. ①). Avoid generating air bubbles.
- g. Transfer **9 µl** (entire amount) of **Block Mix with DNA library** (column 1) into column 3 containing the remaining reagents and mix well by pipetting up and down 5-10 times (Figure 7. ②). Avoid generating air bubbles.

- h. **Quickly seal** the PCR tube (or PCR plate) with a new cap (or a new sealing film) completely and continue incubation at **65°C overnight (16-20 h, optimal time: 16 h)**. All reagents should now be combined in 1 tube per sample (e.g. column 3). Remove all empty PCR tubes, if necessary.
- i. Make sure that the PCR tube (or PCR plate) is completely sealed and the lid temperature is 105°C.

Important: The volume of hybridization mixture should be 29 to 32 µl, depending on the degree of evaporation during incubation.

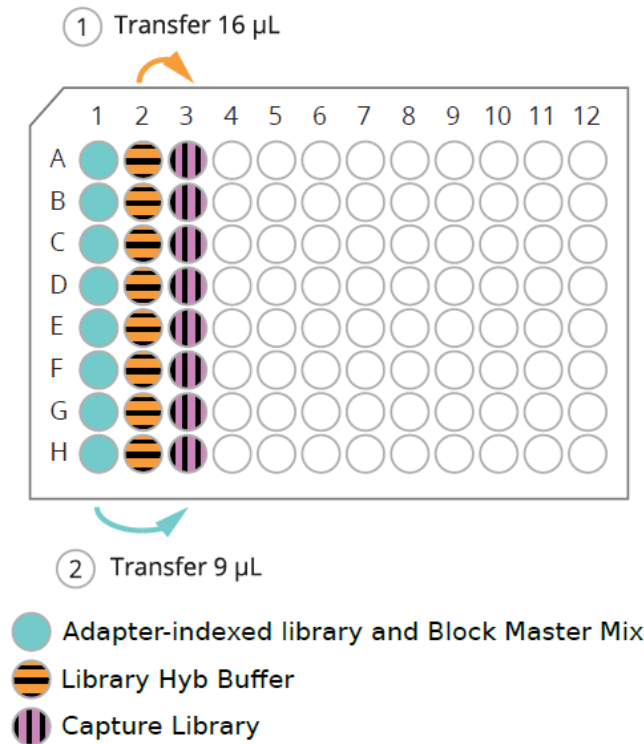


Figure 7. Transfer 16 µl from Column 2 to Column 3 and 9 µl from Column 1 to Column 3.

Step 2. Preparation of Streptavidin Beads

[Required Material / Preparation]

- Keep the hybridization reaction at 65°C at all times.
- The preparation of the Streptavidin Beads takes ca. 30 min and should be started before the hybridization reaction is complete.
- Target Capture Box #2→ Wash Buffer #1, Wash Buffer #2, Wash Buffer #3
- Streptavidin beads
- Nuclease-free water
- Turn water bath to 70°C and measure that temperature is accurate with a thermometer.
- Preheat thermo-mixer at 70°C. Measure that temperature is accurate with a thermometer.

[Procedure]

1. **Pre-heat Wash Buffer #3 at 70°C** in a water bath for the next step: “Step 3. Selection of the Target Captured Library”.
2. Vortex Streptavidin beads to achieve a homogeneous solution.
3. Prepare **50 µl of the Streptavidin beads** per sample in a new 1.5 ml LoBind tube (beads for multiple samples can be pooled and washed in a single tube if needed, e.g. maximum of 5 samples per tube).
4. Wash the Streptavidin beads as follow:
 - a. **Add 200 µl of Wash Buffer #1** per sample to each tube containing the Streptavidin beads.
 - b. Mix well by vortexing/pipetting and spin down briefly.
 - c. Put the tube in the magnetic separator and incubate for **2-4 minutes** or until the solution is clear.
 - d. Keep the tube in the magnetic separator and discard the supernatant (be careful not to touch the beads while removing the supernatant).
 - e. Remove the tube from the magnetic separator and repeat **steps a-d** two more times (for a **total of 3 times**).
5. **Add 200 µl of Wash Buffer #1** per sample to the beads, mix well to form a homogenous bead solution and make aliquots of **200 µl** into separate 1.5 ml LoBind tubes for each sample.

Step 3. Selection of Target-Captured Library

[Procedure]

1. Keep the sample-hybridization mixture from **Part 2, Step 1. Hybridization of the Library** in the thermal cycler at 65°C.
2. Gently unseal the PCR tube (or PCR plate) in the thermal cycler and **immediately transfer all of each sample-hybridization mixture (29-32 µl depending on evaporation)** to the corresponding bead solution from **Part 2, Step 2.5**. Immediately invert the tube 3-5 times and then mix thoroughly by pipetting 5-10 times.
3. **Rotate the sample** in a rotator (25 rpm) for **30 minutes at room temperature**. Check occasionally that the liquid is moving well within the tube and that the beads do not dry.

Important: Do not vortex the tube vigorously, as it may damage the probes.

4. Spin down briefly.
5. Put the tube in a magnetic separator for **2-4 minutes** or until the solution is clear. Carefully remove the supernatant.
6. Take the tube out of the magnetic separator and add **500 µl** (180 µl for PCR tube or 96 well plate) of **Wash Buffer #2** to each tube. Mix well on a vortexer and pulse-spin down.
7. Incubate the sample for **15 minutes at room temperature** and occasionally mix by vortexing or incubate on a rotator (25 rpm).
8. Briefly mix the sample on a vortexer and spin down briefly. Put the tube in the magnetic separator for **2-4 minutes** or until the solution is clear and remove the supernatant.
9. High stringency wash with Wash Buffer #3 at 70°C:

Important: Work fast, keep the sample and Wash buffer #3 at 70°C as much as possible and keep times at room temperature as short as possible.

- a. **Add 500 µl** (180 µl for PCR tube or 96 well plate) of 70°C pre-heated Wash Buffer #3 to each tube and mix well on a vortex mixer. Spin down briefly.
- b. **Incubate the solution for 10 minutes at 70°C** in a thermo-mixer at 500 rpm. Check every 2-3 min if the solution is homogenous, and gently mix by tapping if necessary.
- c. Briefly mix the sample by gentle vortexing or pipetting 5-10 times and spin down.
- d. Put the tube in the magnetic separator until the solution is clear and carefully remove the supernatant.
- e. Repeat washing steps **a-d** twice with Wash Buffer #3 for a **total of 3 washes**.
- f. Spin down the tube for 3-5 seconds and put the tube in the magnetic separator to remove any residual liquid completely with a P10 or smaller pipette.

Important: Wash Buffer #3 must be completely removed.

Part 2

- g. Add **30 µl of nuclease-free water** to each tube, resuspend the beads well and spin down briefly. This now contains the target enriched DNA bound to magnetic beads. **Do not discard the beads!** Continue directly to the next step.

Part 3. Amplification of Target-Captured Library

Step 1. Amplification of the Target-Captured Library

[Required Material]

- Target Capture Box #1 → Post Capture PCR Forward Primer, Post Capture PCR Reverse Primer
- 2x PCR Mix
- 0.2 mL PCR tubes and caps

Note: In this step only half of the on-bead captured DNA will be used for the amplification reaction. Store the remaining half at -30°C to -15°C as a safety backup.

Important: Combine all reagents on ice.

[Procedure]

1. Mix bead-library solution from Part 2, Step 3 point “g” well by pipetting up and down 5-10 times, and **transfer 15 µl of homogenous solution** into a new 0.2 mL PCR tube. Store remaining bead-DNA solution at -30°C to -15°C.
2. Prepare a PCR master mix as described in Table 12 (add 0.5x additional amount of reagents for multiple libraries, an example for 8 reactions is given).

Table 12. Composition of PCR mix (setup on ice)

Reagent	Volume for 1 Library (µl)	Volume for 8.5 Libraries (µl)
Nuclease-free water	5	42.5
Post Capture PCR Forward Primer	2.5	21.25
Post Capture PCR Reverse Primer	2.5	21.25
PCR Polymerase	25	212.5
Total volume	35	297.5

3. Add **35 µl of the PCR mix** to each PCR tube and mix well by pipetting up and down 5-10 times. Spin down briefly and keep on ice.
4. Run the PCR program shown in Table 13 in a thermal cycler.

Note: At the end of the PCR program, the beads will have settled to the bottom of the tube. This is normal and does not impact the overall performance, as long as the input was homogenous at the start of the PCR.

Table 13. PCR program (lid: 105°C, vol=50 µl, limit ramp rates to max. 4 °C/sec for heating and max. 2.5 °C/sec for cooling)

Step	Temperature	Time
Step 1	98°C	45 seconds
Step 2	98°C	15 seconds
Step 3	60°C	30 seconds
Step 4	72°C	1 minute
Step 5		Repeat step 2 to step 4 for a total of 17 cycles
Step 6	72°C	10 minutes
Step 7	4°C	Hold

Step 2. Bead clean-up of Amplified Target-Captured Library

[Required Material]

- Clean-up Beads

Important: Keep the beads at room temperature for at least 30 minutes before use. Store Clean-up Beads at +2°C to +8°C after use and do not freeze.

- 80% ethanol solution (always prepare fresh on day of experiment, e.g. 8 ml 100% EtOH + 2 ml nuclease free water)
- Nuclease-free water

[Procedure]

1. Let the Clean-up Beads come to room temperature for at least 30 min. Mix well so that they appear homogenous and consistent in color..
2. **Add 90 µl Clean-up Beads (1.8x volume)** directly to the **50 µl amplified captured DNA library**. Mix well by pipetting/vortexing and spin down briefly (make sure not to pellet the beads, they need to stay homogeneously in solution). **Incubate at room temperature for 5 minutes.**
3. Place the tube in a magnetic separator for **3-5 minutes** or until the solution is clear.
4. Keep the tube in the magnetic separator and carefully discard the supernatant (do not touch the beads as this might result in sample loss).
5. Keeping the tube in the magnetic separator, **add 200 µl fresh 80% ethanol** to each sample tube.
6. **Incubate for 30 seconds at room temperature** and then discard the 80% ethanol (be careful not to touch the beads while you remove the supernatant).
7. Repeat the 80% ethanol wash (step 5-6) one more time **for a total of two washes.**
8. Spin down briefly, put the tube back into a magnetic separator and discard residual ethanol with a P10 or smaller pipet.
9. **Dry the sample tube at room temperature for 3-5 minutes** or until residual ethanol has completely evaporated (avoid drying beads until beads appear cracked, as this might reduce elution efficiency).
10. **Add 21 µl of nuclease-free water** to the sample and mix well on a vortexer. Pulse-spin down and incubate the sample **at room temperature for 2 minutes.**
11. Place the tube in the magnetic separator for **2 minutes** until solution is clear.
12. **Transfer the supernatant (20 µl)** to a new 1.5 ml LoBind Tube. This is the final target enriched library.

Stopping Point:- Samples can be stored at -30°C to -15°C here.

Step 3. Quality Assessment and Quantification of Final Libraries

1. Quantify the final, target enriched Libraries from Part 3, Step 2.12 using a fluorometric method such as the Qubit dsDNA High Sensitivity kit.
2. Additionally, determine the average fragment size with instruments such as TapeStation, Bioanalyzer or Fragment Analyzer (expected: single peak between 200-600 bp and the maximum at ca. 350-450 bp. The profile of FFPE DNA is normally ca. 50 bp smaller in general).

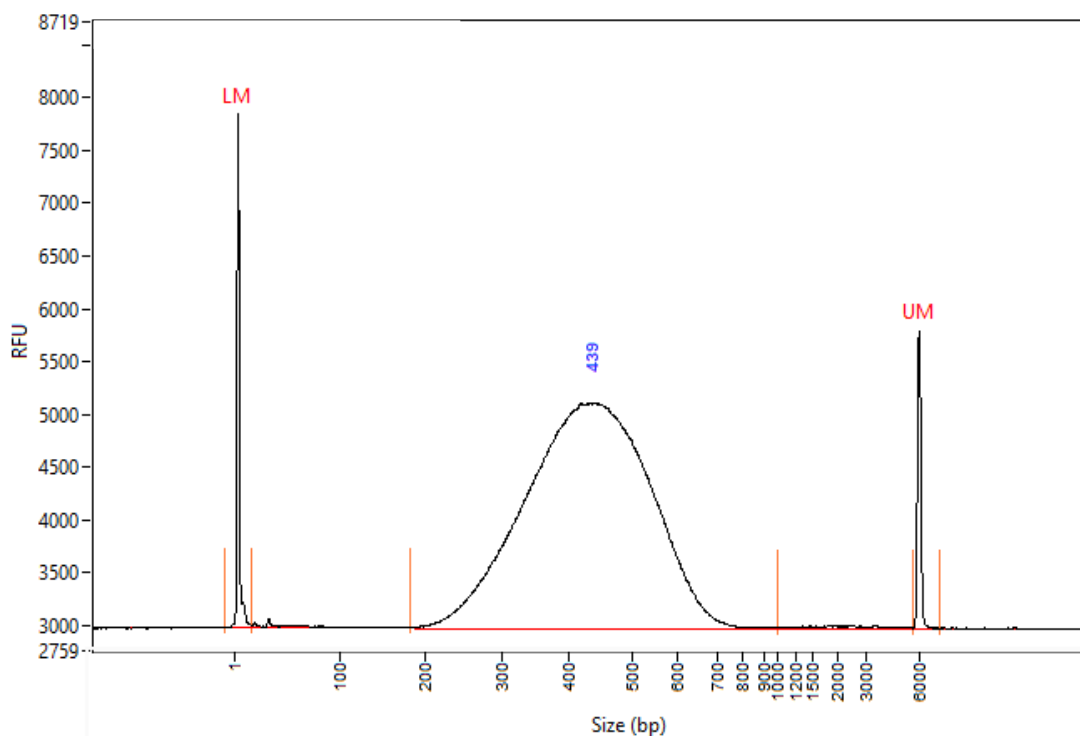


Figure 8. The electrophoresis diagram shows a peak in the region of 439 bp of the captured library.

In addition, none or only minimal primer dimers at ca. 120 bp should be visible (see Figure 8). If a clear primer dimer peak is visible, an additional bead clean up step using a [bead] : [sample] ratio = 0.8:1 is recommended (see **Appendix**).

Accurate quantification and at least 4 nM of each final library are required for sequencing. A template for calculation of final library molarity is provided in the NGS assays support section at www.viennalab.com//support/ngs-assays.

Instruction for pooling and Illumina sequencing

In this step, all target captured samples are pooled.

Critical: Only samples with a unique index combination can be pooled and sequenced at the same time.

Note: The final library sizing profile represents the DNA insert length plus the length of the adapter sequences (approximately 120 bp for dual indexed adapters). For example, this means that the actual average DNA fragment length, that contains information about the sample, is ca. 320 bp, although the final library size is 440 bp.

For Illumina sequencing, 2x150 bp paired end sequencing mode is recommended. In case the average fragment size of the final library is <325 bp, 2x100 bp paired end sequencing can also be used. Depending on the Illumina machine and desired target coverage, between 8 and 16 samples can be pooled and sequenced together. In more detail, in case of somatic mutation sequencing, 500x average sequencing coverage can be achieved with 1.5M-2 M read pairs per sample, which allows pooling 16 samples for a MiSeq Reagent Kit v3, and 8-10 samples for a MiSeq Reagent Kit v2.

Refer to the NGS assays support section at www.viennalab.com/support/ngs-assays for help in preparing information for the sample sheet required for sequencing.

Bioinformatic Analysis

NGS sequencing data can be analysed with ViennaLab’s proprietary bioinformatic analysis software: GENOVESA. We recommend to access our bioinformatic solution GENOVESA from a computer with at least 6 GB of RAM, a screen resolution of at least 1920x1080 (Full HD) and a minimum internet upload/download speed of 10Mbps.

Getting started


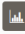







Access the software through the weblink <https://ngs-genovesa.biovendor.group>, choose ViennaLab NGS Assay and **complete the registration form**. Note that it is possible to register up to 3 users and get shared access to the uploaded data of the main account. Once your account has been approved, log in into GENOVESA with your username (email) and password. It is recommended to initiate account registration in advance.

Managing projects

After successful log in into the platform, click “Add project” to create a new project and upload fastq files by choosing the appropriate analysis workflow depending on the purchased kit. Once upload is completed, analysis will start automatically. All projects are displayed in the “**Projects**” table together with the analysis status and project details. More information about the uploaded samples can be accessed by clicking on the corresponding project once processing of the data has finished.

Examining your data

The “**Samples of the project**” section contains information about the sample status, sequencing statistics and the Quality Control (QC) of the data. The “Actions” field on the right allows inspection of detailed Mapping QC and FASTQ QC data, as well as management of sample relevant information.

ID	<input type="checkbox"/>	SampleID	Status	Total reads	Total Variants	Median depth	% Duplicates	% Depth 30X	% Depth 100X	Actions
7171	<input type="checkbox"/>	21S8	PASSED	2 850 684	64	916	23	99	99	  
7172	<input type="checkbox"/>	21S10	PASSED	3 499 112	63	1142	22	99	99	  
7555	<input type="checkbox"/>	36S3	PASSED	2 674 850	107	805	13	99	98	  

Assessing variants

Every assessed sample has the potential to carry clinically relevant variants. The “**Variants**” section contains a list of variants found in a particular sample, including useful information from various databases. In particular, this section comprises different sub-sections such as:

Transcript system: Ensembl RefSeq

Filter by:

	Sample ID	Int. CL A	Int. CL B	ClinVar	Freq / Proj	Freq / Gen	Gene / Transcript	Chr-Position	dbSNP	HGVSc / HGVSp	Type	Consequence	Var Quality	Vi Actions
>	33H1	5	0	5	2 / 8	2 / 3628	BRCA1 NM_007294.4	chr17:43099773	rs80358047	c.547+2T>A	SNV	splice donor variant	good	<input type="button" value=""/>
>	33H1	5	0	5	2 / 8	2 / 3628	ATM NM_000051.4	chr11:108318856	rs375783941	c.6040G>T p.Glu2014Ter	SNV	stop gained	good	<input type="button" value=""/>
>	33H1	5	0	3	8 / 8	191 / 3628	PRSS1 NM_002769.5	chr7:142752476	rs1232891794	c.500G>C p.Ser167Thr	SNV	missense variant	good	<input type="button" value=""/>

Total 3 10/page < 1 > Go to 1

- **ViennaLab Filter:** shows a list of variants after pre-set filters optimized for simplified and time-saving identification of clinically relevant variants were applied.
- **All Variants:** contains an unfiltered list of variants.
- **Custom Filter:** allows flexible tailoring of various filtering parameters.
- **Preselected Variants:** Allows the preselection of a subset of variants by the user before being finalized into the report. This might be helpful especially in case of a large number of identified variants (e.g. Clinical Exome Sequencing NGS Assay data).

ViennaLab Filter All Variants Custom Filter Diagnoses Preselected Variants Signed Out Variants

READ DEPTH MIN. 25

FREQ VCF MIN. (%) 20.0

FREQ PROJECT MAX. 1000

FREQ SUBJECT MAX. 500

GENOMAD MAX AF 0.0200

SYNONYMOUS VARIANTS NO YES

SHOW HOMOPOLYMERS NO YES

SHOW REPEATS NO YES

SHOW OTHER NO YES

GENES

GENOTYPE

IMPACT

CONSEQUENCE

CLINVAR

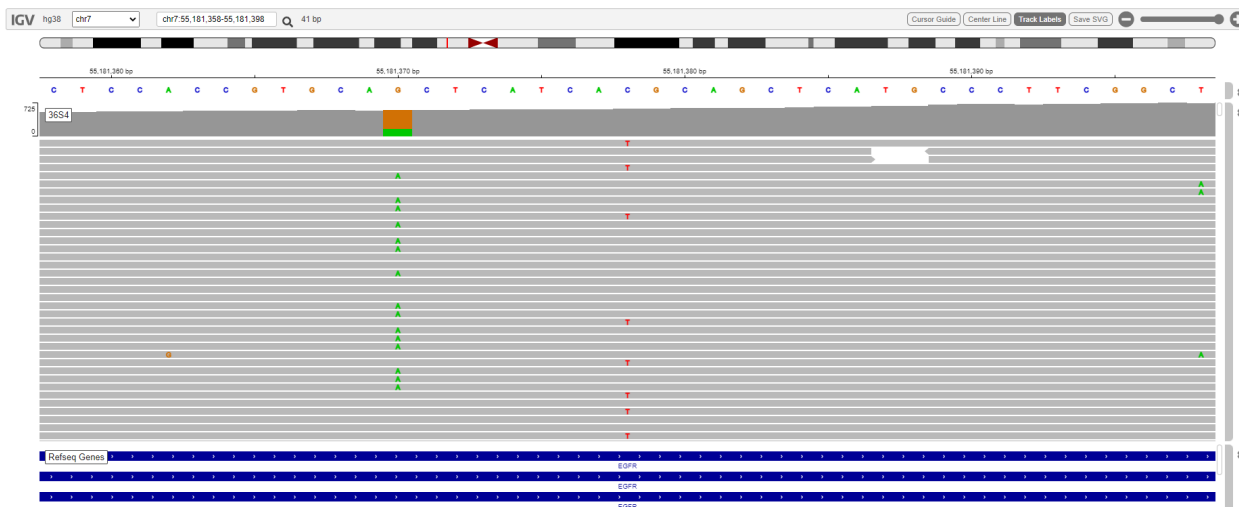
- Pathogenic
- Likely_pathogenic
- Risk_factor
- Drug_response
- Undefined
- Confers_sensitivity
- PathogenicLikely_pathogenic
- Uncertain_significance
- Conflicting_interpretations_of_pathogenicity
- Not_provided
- Other
- Affects
- Protective
- Association

INT. CLASSES

- 5 - PATHOGENIC
- 4 - LIKELY PATHOGENIC
- 3 - UNCERTAIN SIGNIFICANCE
- 2 - LIKELY BENIGN
- 1 - BENIGN
- 0 - CONFLICTING INTERPRETATION
- RF - RISK FACTOR
- DA - DISEASE ASSOCIATION
- DR - DRUG RESPONSE
- PR - PROTECTIVE
- PA - PHENOTYPE ASSOCIATION
- PM - POLYMORPHIC
- IV - INTRONIC VARIANTS
- SA - SEQUENCING ARTIFACT
- 0 - NONE

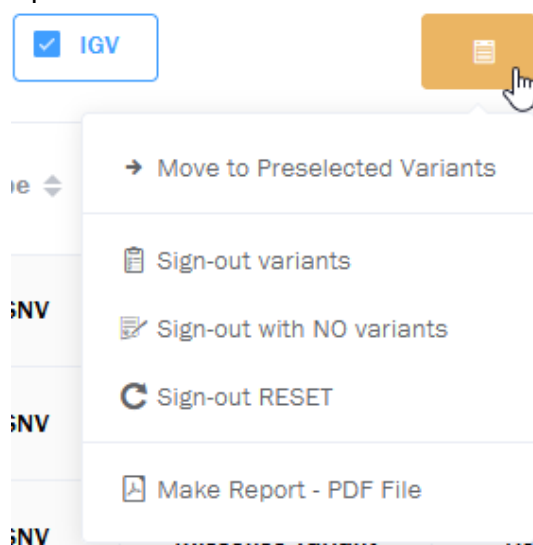
PSEUDOPANELS

Visual display and inspection of SNVs and InDels through a one-click integrated viewer is achieved by ticking the “IGV” box and clicking on the IGV symbol below the chromosomal coordinate of the variant of interest.



Variant reporting

Relevant **variants are scored** by up to two users in the “Internal Classification by user A (Int. Cl. A)” and B column utilizing the provided information. Clinically significant variants which should be included in the **genetic variant report need to be selected and signed out**. Do this by ticking the box on the left of the variant, then click on the document symbol, select “Sign-out variants” and “Make Report” in the drop-down menu.



Additional remarks

Copy number variation (CNVs) and structural variation (SVs) analysis and visualization are available upon request for the Hereditary Cancer NGS Assay and Somatic Mutations NGS Assay, respectively.

For technical support on our NGS products, including troubleshooting of the experimental library preparation as well as help with the bioinformatic analysis and requests for CNVs and SVs analysis contact ViennaLab through the local distributor or directly at techhelp@viennalab.com.

Appendix

Removal of Primer-Dimers

Note: Detection of primer-dimers can be done by gel-electrophoresis based instruments such as TapeStation, Fragment Analyzer and Bioanalyzer.

1. If the primer-dimer peak is clearly visible at ca. 125 bp, an additional bead clean-up step is recommended.

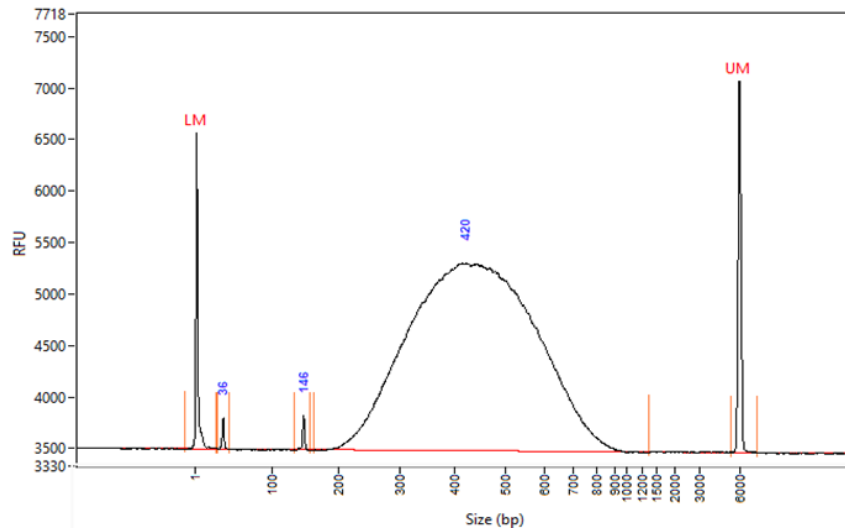


Figure 9-1. The electrophoresis diagram shows the primer-dimer peak at 146 bp.

2. Purify the sample using the procedure shown in **Part 1, Step 5** with a [bead] : [DNA sample] = 0.8 : 1
3. Confirm the removal of primer-dimers through available instrumentation and re-quantify the purified final libraries.

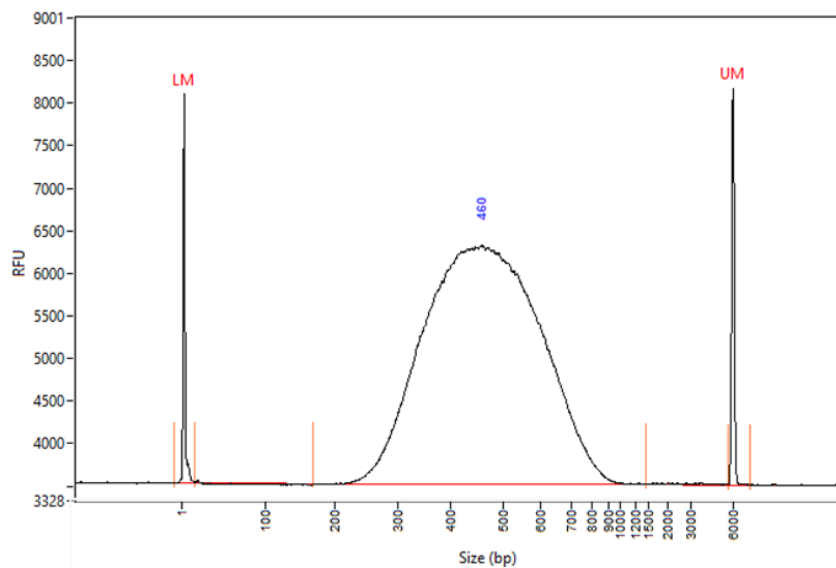


Figure 9-2. The electrophoresis diagram shows that most primer-dimers at 146 bp were removed successfully.

Revision History

Version	Date	Description
rev 1.0	2022-07	Initial version

Notes

Notes

Notes

REF



9-221	Hereditary Cancer NGS Assay	16 reactions
9-231	Somatic Mutations NGS Assay	16 reactions
9-241	Clinical Exome Sequencing (CES) NGS Assay	4x4 reactions

Distributed by:



Manufacturer

ViennaLab Diagnostics GmbH

Gaudenzdorfer Guertel 43-45

A-1120 Vienna, Austria

t: (+43-1) 8120156-0

e: info@viennalab.com



www.viennalab.com